

The Effects of Hearing Loss on the Body

30%–40%

Those with hearing loss demonstrate a 30% to 40% more accelerated rate of cognitive decline.¹

Those with diabetes are **28% more likely** to have a hearing loss of mild or greater sensitivity.⁸

with diabetes

Connections between heart and hearing health are meaningful, as cardiovascular disease can affect auditory pathways in the ear in ways that negatively affect speech understanding and the speed and accuracy at which elements of speech are processed.²



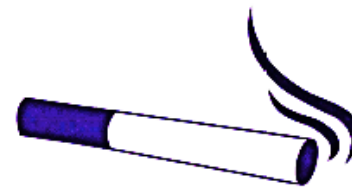
A staggering 93% of Caucasian men ages 60 to 69 **have high-frequency hearing loss.**⁷



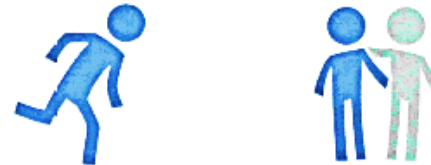
Odds of hearing loss are 5.5 times greater in men versus women.⁶



Current smokers are **1.69 times as likely** to have a hearing loss as nonsmokers.⁹



For every 10 dB increase in hearing loss, there is a 1.4-fold increase in the odds of a fall in the preceding year.¹⁰



Those with mild hearing loss are twice as likely to **develop dementia.**³

2 times



Those with moderate hearing loss are three times as likely to **develop dementia.**⁴

Those with severe hearing loss are nearly five times as likely to **develop dementia.**⁵

5X

SOUND information
brought to you by your local audiology professional



1. Lin FR, et al. Hearing loss and Cognitive Decline in Older Adults. *Journal of the American Medical Association*. 2013;173(4):293-299. 2. Hull RH. Why Cardiovascular Health Should be Added to the Hearing Case History. *The Hearing Journal*. 2014;67(5):22-26. 3. Lin FR, et al. Hearing Loss and Incident Dementia. *JAMA Neurology*. 2011;68(2):214-220. 4. Lin FR, et al. Hearing Loss and Incident Dementia. *JAMA Neurology*. 2011;68(2):214-220. 5. Lin FR, et al. Hearing Loss and Incident Dementia. *JAMA Neurology*. 2011;68(2):214-220. 6. Bainbridge KE, Cowie CC, Hoffman HJ. Diabetes and Hearing Impairment in the United States: Audiometric Evidence from the National Health and Nutrition Examination Survey, 1999 to 2004. *Annals of Internal Medicine*. 2008; 149(1):1-10. 7. Bainbridge KE, Cowie CC, Hoffman HJ. Diabetes and Hearing Impairment in the United States: Audiometric Evidence from the National Health and Nutrition Examination Survey, 1999 to 2004. *Annals of Internal Medicine*. 2008; 149(1):1-10. 8. Bainbridge KE, Cowie CC, Hoffman HJ. Diabetes and Hearing Impairment in the United States: Audiometric Evidence from the National Health and Nutrition Examination Survey, 1999 to 2004. *Annals of Internal Medicine*. 2008; 149(1):1-10. 9. Cruickshanks KJ, et al. Cigarette Smoking and Hearing Loss: The Epidemiology of Hearing Loss Study. *Journal of the American Medical Association*. 1998;279(21):1715-1719. 10. Lin FR, Ferrucci L. Hearing Loss and Falls Among Older Adults in the United States. *Arch Intern Med*. 2012; 172(4):369-371.